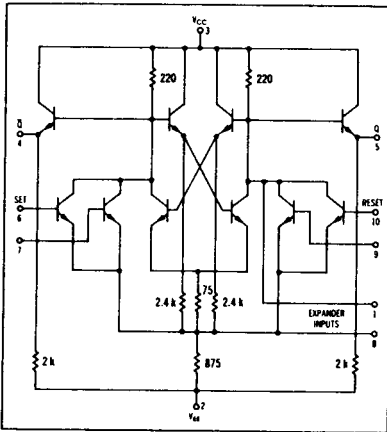


R-S FLIP-FLOP

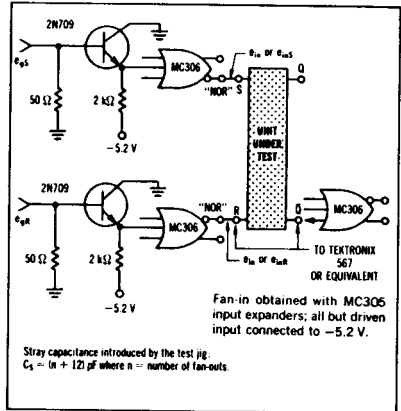
MC302

MECL MC300 series

DC Set-Reset flip-flop with an expandable input and buffered outputs.

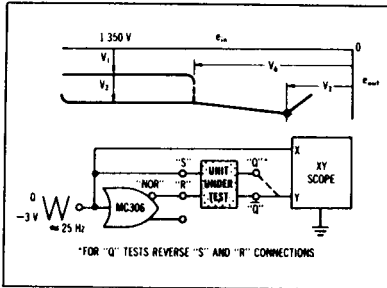


SWITCHING TIME TEST CIRCUIT



Stray capacitance introduced by the test jig:
 $C_s = (n + 1) \mu\text{F}$ where n = number of fan-outs.

TRANSFER CHARACTERISTICS



SWITCHING TIME WAVEFORMS

